



GROUP 14 – REAR AXLE

REAR AXLE ASSEMBLY

- FIG. 14-8 R-100 SERIES (CODE 1424)
- FIG. 14-1 R-110 SERIES (CODE 1401)
- FIG. 14-2 R-120 SERIES (CODE 1402)
- FIG. 14-3 R-130 SERIES (CODE 1433)
- R-140-4x4 SERIES (CODE 1403)
- FIG. 14-3 R-150 SERIES (SINGLE REDUCTION, CODE 1403)
- FIG. 14-9 R-150 SERIES (TWO SPEED, CODE 1457)
- FIG. 14-4 R-160 SERIES (SINGLE REDUCTION, CODES 1404, 1405, 1452)
- FIG. 14-5 R-160 SERIES (TWO SPEED, CODES 1410, 1411, 1453)
- FIG. 14-4 R-160-4x4 SERIES (CODE 1404)
- FIG. 14-4 RC-160 SERIES (SINGLE REDUCTION, CODE 1404)
- FIG. 14-5 RC-160 SERIES (TWO SPEED, CODE 1410)

ELECTRIC SHIFT

- FIG. 14-6 R-160, RC-160 SERIES

ELECTRIC SHIFT CONTROL

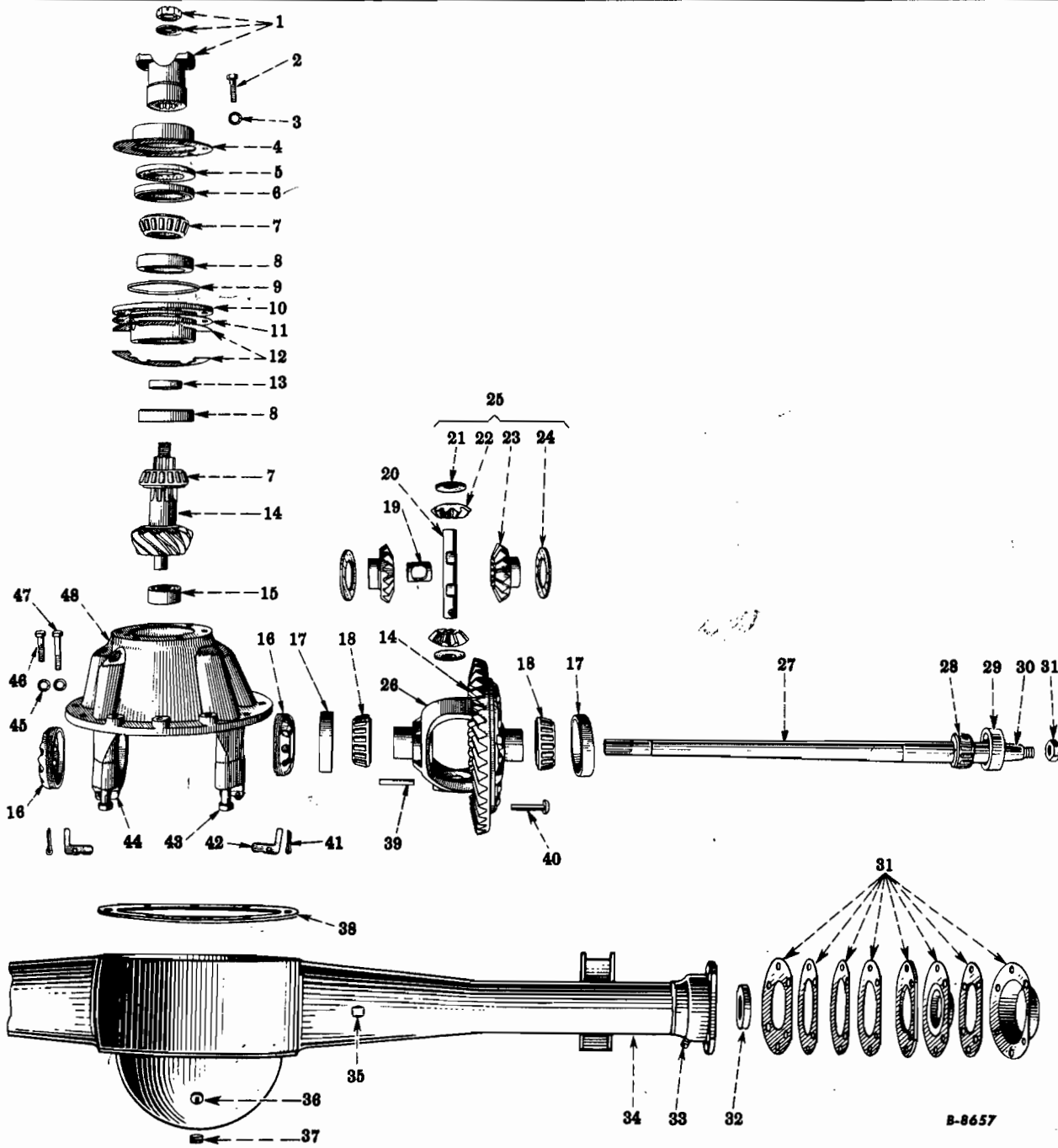
- FIG. 14-7 R-160, RC-160 SERIES

MANUAL SHIFT

- FIG. 14-10 R-150 SERIES

MT-97

GROUP 14 - REAR AXLE



B-8657

FIG. 14-1 - REAR AXLE ASSEMBLY (Semi Floating, Code 1401)
(R-110 Series)

GROUP 14 - REAR AXLE



KEY	DESCRIPTION	NO. REQ'D	I H PART NUMBER
FIG. 14-1 - REAR AXLE ASSEMBLY (Semi Floating, Code 1401)			
	AXLE, w/BRAKES, ASM.		
	3.73 TO 1 RATIO	1	65 661 R91
	4.11 TO 1 RATIO (NOT FOR TRANS. CODE 1383)	1	65 662 R91
	4.11 TO 1 RATIO (FOR TRANS. CODE 1383)	1	84 821 R91
	4.77 TO 1 RATIO	1	84 819 R91
	5.13 TO 1 RATIO	1	65 663 R91
	DIFFERENTIAL, ASM.		
	3.73 TO 1 RATIO	1	65 764 R93
	4.11 TO 1 RATIO	1	65 765 R93
	4.77 TO 1 RATIO	1	69 432 R93
	5.13 TO 1 RATIO	1	65 766 R93
1	SEE GROUP 06		
2	BOLT	6	142 678 H
3	WASHER, LK., 3/8", EXT.	6	114 606
4	RETAINER, w/SEAL, ASM.	1	82 492 R91
5	SEAL	1	82 246 R1
6	SEAL, ASM.	1	79 680 H 37H
7	BEARING	2	71 320 R91
8	BEARING	2	50 083 R1
9	SEAL	1	50 078 R1
10	CAGE, w/CUPS, ASM.	1	50 113 R1
11	SHIM		
	.010" THICK	AR	50 086 R1
	.032" THICK	AR	50 087 R1
12	SHIM, (.003" THICK)		
	LOWER	AR	50 084 R1
	UPPER	AR	50 085 R1
13	SPACER		
	.438" THICK	AR	50 261 R2
	.441" THICK	AR	50 262 R2
	.444" THICK	AR	50 263 R2
	.447" THICK	AR	50 264 R2
	.450" THICK	AR	50 265 R2
	.453" THICK	AR	50 266 R2
	.456" THICK	AR	50 267 R2
	.459" THICK	AR	50 268 R2
	.462" THICK	AR	50 269 R2
	.465" THICK	AR	50 270 R2
	.468" THICK	AR	50 271 R2
14	GEAR, SET		
	3.73 TO 1 RATIO	1	65 743 R93
	4.11 TO 1 RATIO	1	65 744 R93
	4.77 TO 1 RATIO	1	69 431 R93
	5.13 TO 1 RATIO	1	65 745 R93
15	BEARING	1	50 103 R92
16	ADJUSTER	2	65 672 R2
17	BEARING	2	65 673 R1
18	BEARING	2	65 674 R91
19	BLOCK	L	1 096 Y

MT-97

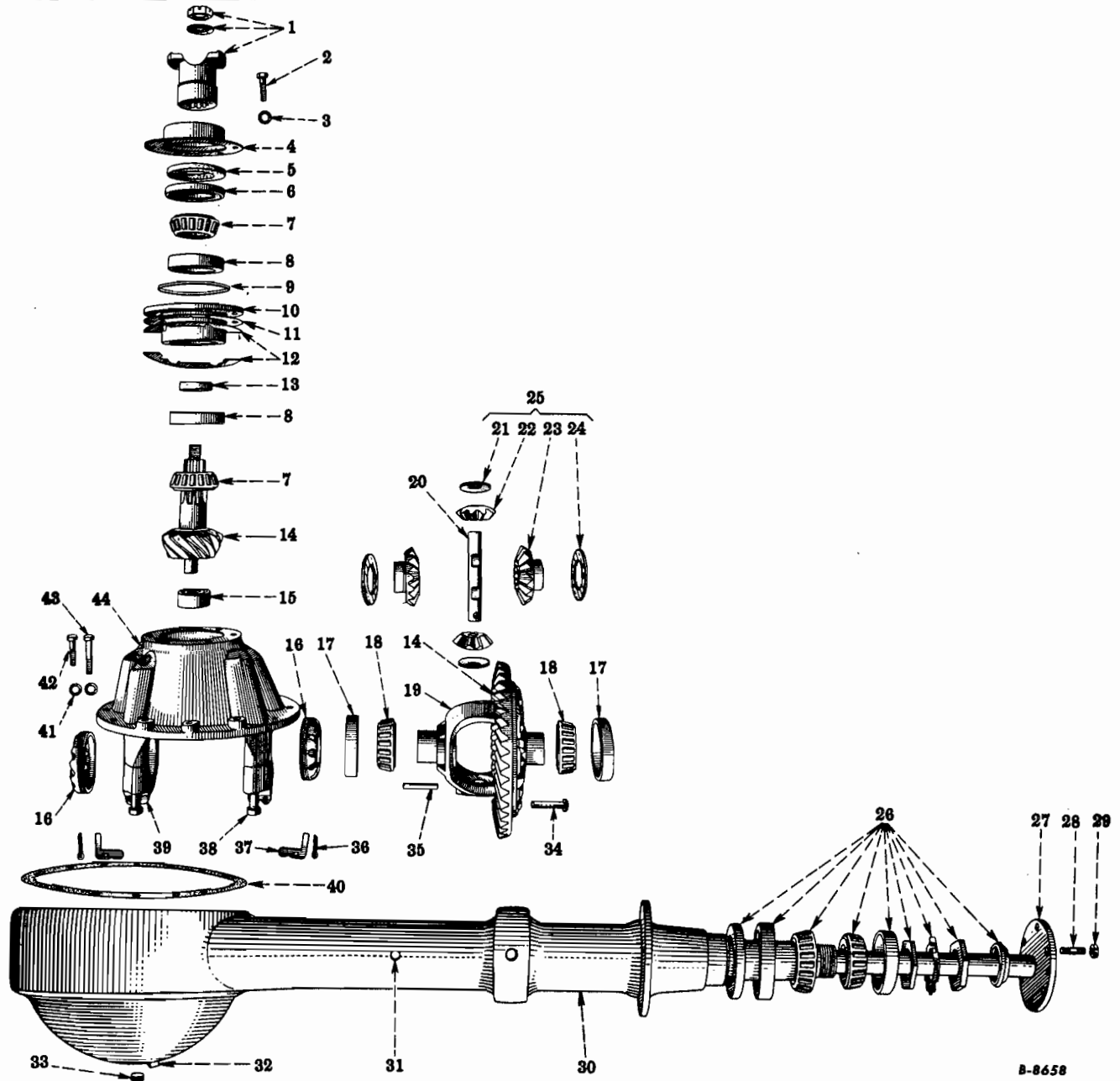
GROUP 14 – REAR AXLE



KEY	DESCRIPTION	NO. REQ'D	I H PART NUMBER
FIG. 14-1 – REAR AXLE ASSEMBLY (Semi Floating, Code 1401) - Continued			
20	SHAFT	1	1 094 Y
21	WASHER	2	109 871 RI
22	GEAR	2	50 817 RI
23	GEAR	2	50 818 RI
24	WASHER	2	109 870 RI
25	GEAR, SET	1	50 988 R92
26	CASE, w/WASHERS, ASM.	1	65 671 R21
27	SHAFT	2	95 030 H
28	BEARING	2	ST 757
29	BEARING	2	13 201 D
30	KEY	2	1 119 Y
31	SEE GROUP 17		
32	SEAL, ASM.	2	89 986 R91
33	PLUG, PIPE, SLT., 1/8"	2	20 059 VA
34	HOUSING, ASM.	1	65 665 R91
35	BREATHER	1	110 891 H
36	PLUG, PIPE, SQ-HD., 3/4" (FILLER)	1	16 845 RI
37	PLUG, PIPE, CTSK., 3/8" (DRAIN)	1	103 873
38	GASKET	1	65 684 RI
39	PIN	1	95 022 H
40	RIVET	10	80 161 RI
41	PIN, COTTER, 3/16 x 1"	2	103 407
42	LOCK	2	13 875 V
43	BOLT	4	65 676 RI
44	NOT SERVICED SEPARATELY		
45	WASHER, LK., 3/8", MED.	12	103 321
46	BOLT	6	80 594 RI
47	BOLT	6	80 297 RI
48	CARRIER, w/CAPS, ASM.	1	65 703 R11

MT-97

GROUP 14 - REAR AXLE



B-8658

FIG. 14-2 - REAR AXLE ASSEMBLY (Full Floating, Code 1402)
(R-120 Series)

KEY	DESCRIPTION	NO. REQ'D	I H PART NUMBER
	AXLE, w/BRAKES, ASM.		
	4.11 TO 1 RATIO	1	129 836 R91
	4.77 TO 1 RATIO	1	129 837 R91
	5.13 TO 1 RATIO	1	129 838 R91
	DIFFERENTIAL, ASM.		
	4.11 TO 1 RATIO	1	65 765 R93
	4.77 TO 1 RATIO	1	69 430 R93
	5.13 TO 1 RATIO	1	65 766 R93

PRINTED IN UNITED STATES OF AMERICA

MT-97 Rev. No. 2, 7/56

GROUP 14 - REAR AXLE



KEY	DESCRIPTION	NO. REQ'D	I H PART NUMBER
FIG. 14-2 - REAR AXLE ASSEMBLY (Full Floating, Code 1402) - Continued			
1	SEE GROUP 06		
2	BOLT	6	142 678 H
3	WASHER, LK., 3/8", EXT.	1	114 606
4	RETAINER, w/SEAL, ASM.	1	82 492 R91
5	SEAL	1	32 24 F
6	SEAL, ASM.	1	52 080 H
7	BEARING	2	51 320 R91
8	BEARING	2	50 003 R1
9	SEAL	1	50 078 R1
10	CAGE, w/CUP, ASM.	1	50 113 R1
11	SHIM		
	.010" THICK	AR	50 086 R1
	.032" THICK	AR	50 037 R1
12	SHIM, (.003" THICK)		
	LOWER	AR	50 084 R1
	UPPER	AR	50 085 R1
13	SPACER		
	.438" THICK	AR	50 261 R2
	.441" THICK	AR	50 262 R2
	.444" THICK	AR	50 263 R2
	.447" THICK	AR	50 264 R2
	.450" THICK	AR	50 265 R2
	.453" THICK	AR	50 266 R2
	.456" THICK	AR	50 267 R2
	.459" THICK	AR	50 268 R2
	.462" THICK	AR	50 269 R2
	.465" THICK	AR	50 270 R2
	.468" THICK	AR	50 271 R2
14	GEAR, SET		
	4.11 TO 1 RATIO	1	65 744 R93
	4.77 TO 1 RATIO	1	69 431 R93
	5.13 TO 1 RATIO	1	65 745 R93
15	BEARING	1	50 103 R92
16	ADJUSTER	2	65 672 R2
17	BEARING	2	65 673 R1
18	BEARING	2	65 674 R91
19	CASE, w/WASHERS, ASM.	1	65 671 R21
20	SHAFT	1	1 094 Y
21	WASHER	2	109 871 R1
22	GEAR	2	50 817 R1
23	GEAR	2	50 818 R1
24	WASHER	2	109 870 R1
25	GEAR, SET	1	50 988 R92
26	SEE GROUP 17		
27	SHAFT	2	65 686 R1
28	STUD	12	55 843 R1
29	NUT, HEX., LK., 7/16NF	12	12 603 R1
30	HOUSING, ASM.	1	65 670 R92
31	BREATHER	1	110 891 H
32	PLUG, PIPE, SQ-HD., 3/4" (FILLER)	1	16 845 R1

PRINTED IN UNITED STATES OF AMERICA

MT-97

GROUP 14 - REAR AXLE

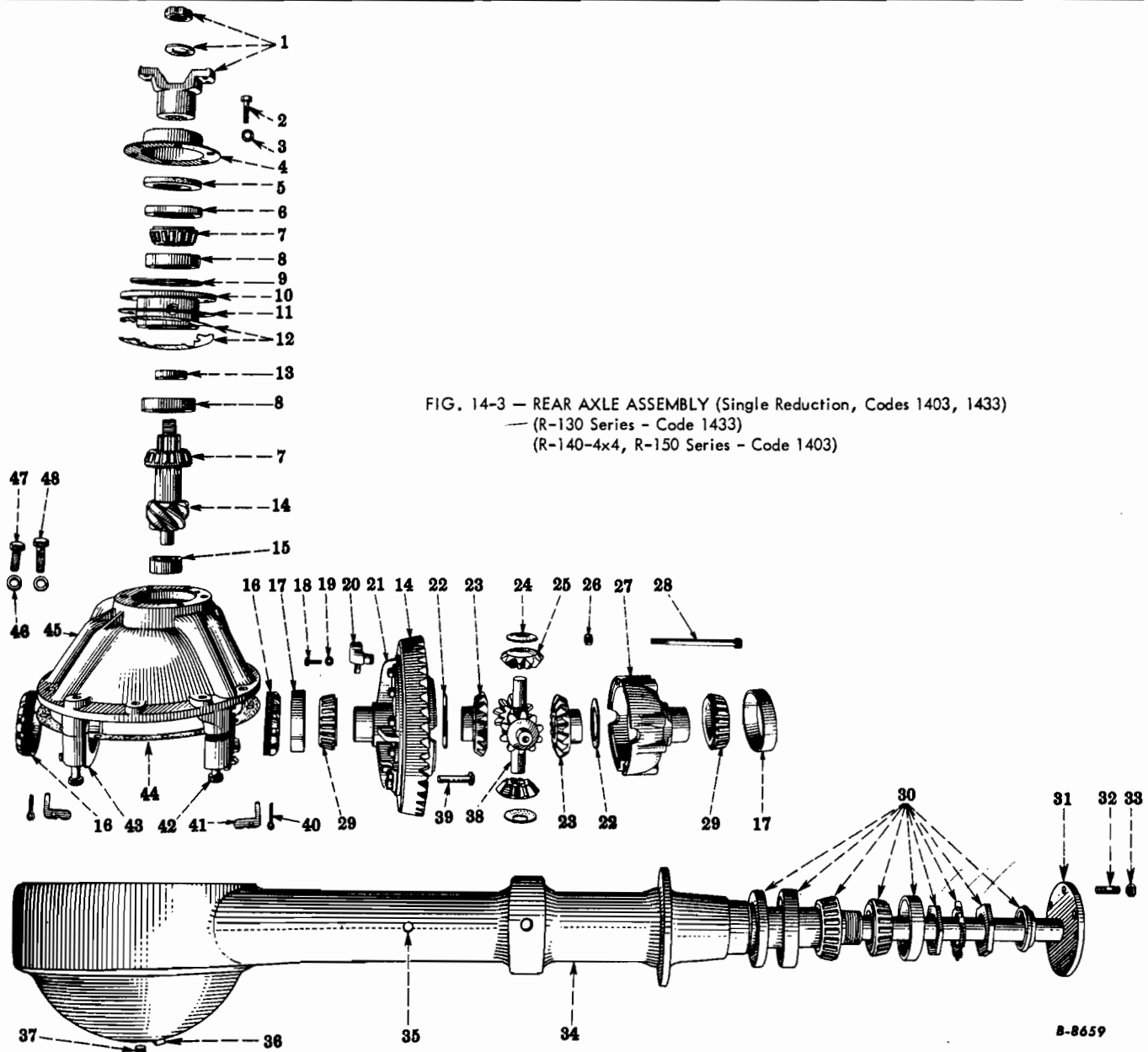


FIG. 14-3 - REAR AXLE ASSEMBLY (Single Reduction, Codes 1403, 1433)
 (R-130 Series - Code 1433)
 (R-140-4x4, R-150 Series - Code 1403)

B-8659

KEY	DESCRIPTION	NO. REQ'D	I H PART NUMBER
	AXLE, ASM.		
	w/STD. BRKS.		
	R-130 SERIES		
	4.30 TO 1 RATIO	1	116 702 R91
	4.875 TO 1 RATIO	1	84 706 R91
	5.571 TO 1 RATIO	1	84 707 R91
	6.166 TO 1 RATIO	1	84 708 R91
	R-140-4x4 SERIES		
	6.166 TO 1 RATIO	1	120 398 R91
	R-150		
	4.875 TO 1 RATIO	1	83 750 R91
	5.571 TO 1 RATIO		83 751 R91
	6.166 TO 1 RATIO		83 752 R91

PRINTED IN UNITED STATES OF AMERICA

MT-97

GROUP 14 – REAR AXLE



KEY	DESCRIPTION	NO. REQ'D	I H PART NUMBER
FIG. 14-3 – REAR AXLE ASSEMBLY (Single Reduction, Codes 1403, 1433) - Continued			
	AXLE, ASM. (CONT'D.)		
	W/INCREASED CAPACITY BRKS., CODE 0405		
	R-150 SERIES		
	4.875 TO 1 RATIO	1	84 208 R91
	5.571 TO 1 RATIO	1	84 209 R91
	6.166 TO 1 RATIO	1	84 210 R91
	DIFFERENTIAL, ASM.		
	R-130 SERIES		
	4.30 TO 1 RATIO	1	116 706 R91
	R-130, R-150 SERIES		
	4.875 TO 1 RATIO	1	83 211 R92
	5.571 TO 1 RATIO	1	83 212 R92
	R-130, R-140-4x4, R-150 SERIES		
	6.166 TO 1 RATIO	1	83.213 R92
1	SEE GROUP 06		
2	BOLT	6	142 678 H
3	WASHER, LK., 3/8", EXT.	6	114 606
4	RETAINER, W/SEAL, ASM.	1	82 492 R91
5	SEAL	1	82 246 R1
6	SEAL, ASM.	1	79 680 H
7	BEARING	2	71 320 R91
8	BEARING	2	50 083 R1
9	SEAL	1	50 078 R1
10	CAGE, W/CUPS, ASM.	1	50 113 R1
11	SHIM		
	.010" THICK	AR	50 086 R1
	.032" THICK	AR	50 087 R1
12	SHIM (.003" THICK)		
	LOWER	AR	50 084 R1
	UPPER	AR	50 085 R1
13	SPACER		
	.438" THICK	AR	50 261 R2
	.441" THICK	AR	50 262 R2
	.444" THICK	AR	50 263 R2
	.447" THICK	AR	50 264 R2
	.450" THICK	AR	50 265 R2
	.453" THICK	AR	50 266 R2
	.456" THICK	AR	50 267 R2
	.459" THICK	AR	50 268 R2
	.462" THICK	AR	50 269 R2
	.465" THICK	AR	50 270 R2
	.468" THICK	AR	50 271 R2
14	GEAR SET		
	R-130 SERIES		
	4.30 TO 1 RATIO	1	116 889 R91
	R-130, R-150		
	4.875 TO 1 RATIO	1	83 504 R93
	5.571 TO 1 RATIO	1	83 505 R93
	R-130, R-140-4x4, R-150		
	6.166 TO 1 RATIO	1	83 506 R93

MT-97

GROUP 14 - REAR AXLE

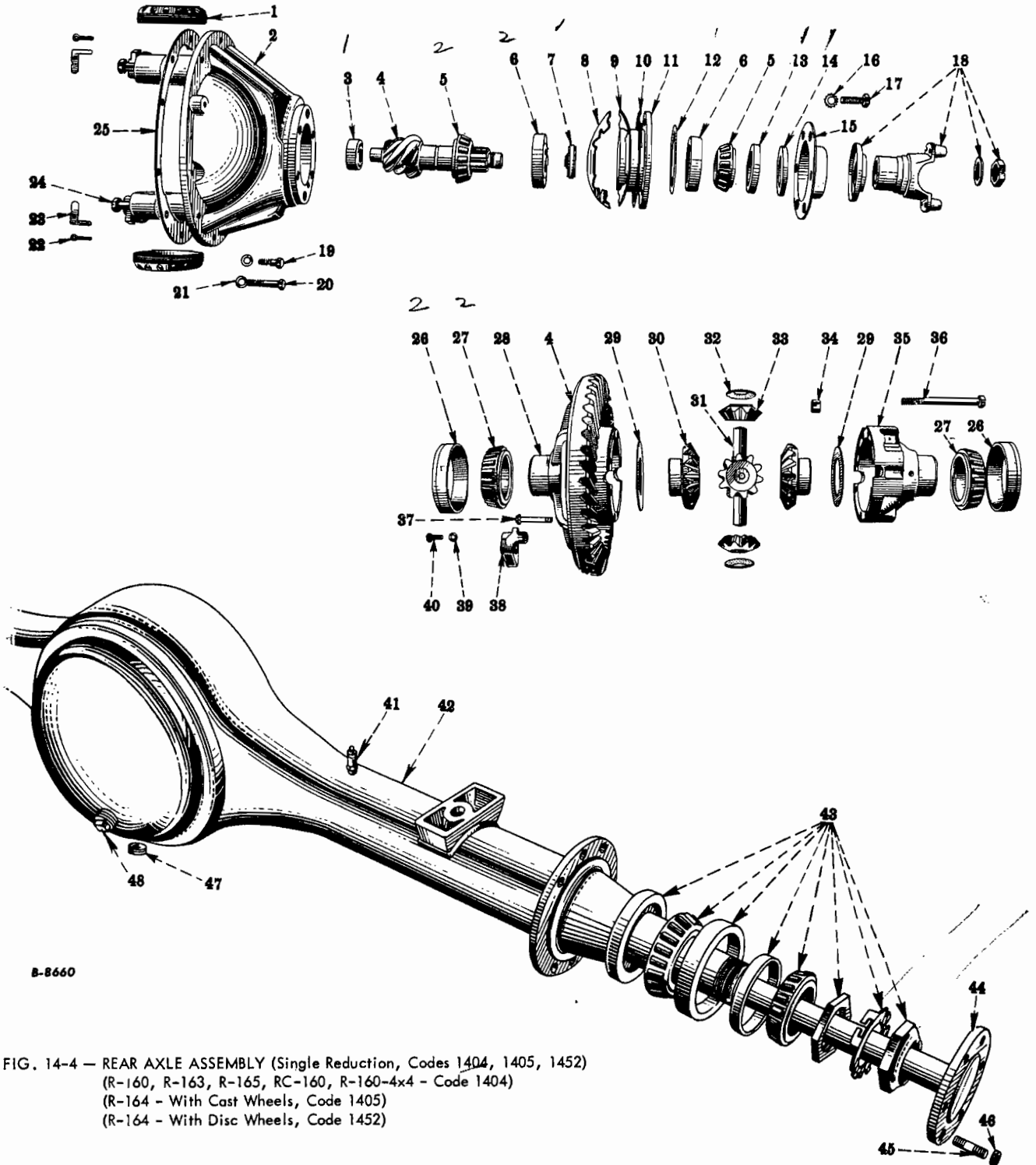


KEY	DESCRIPTION	NO. REQ'D	I H PART NUMBER
FIG. 14-3 - REAR AXLE ASSEMBLY (Single Reduction, Codes 1403, 1433) - Continued			
15	BEARING	1	50 103 R92
16	ADJUSTER	2	50 102 R2
17	BEARING	2	ST 964
18	BOLT, HEX-HD., 1/4NC x 1/2"	1	181 059
19	WASHER, LK., 1/4", MED.	1	103 319
20	SCOOP	1	83 391 R91
21	CASE	1	50 319 R1
22	WASHER	2	50 313 R1
23	GEAR	2	82 770 R1
24	WASHER	4	50 314 R1
25	GEAR	4	50 606 R1
26	NUT, HEX., LK., 3/8NF	8	451 114
27	CASE	1	50 318 R1
28	BOLT	8	60 339 R1
29	BEARING	2	ST 2 010
30	SEE GROUP 17		
31	SHAFT		
	R-140-4x4 SERIES, LONG	1	120 373 R1
	R-140-4x4 SERIES, SHORT	1	120 374 R1
	R-130, R-150 SERIES	2	82 778 R1
32	STUD	12	113 801 H
33	NUT, HEX., LK., 1/2NF	12	12 565 R1
34	HOUSING, ASM.		
	R-130 SERIES		83 072 R91
	R-140-4x4 SERIES	1	120 395 R91
	R-150 SERIES	1	82 779 R91
35	BREATHER	1	110 891 H
36	PLUG, PIPE, SQ-HD., 3/4" (FILLER)	1	16 845 R1
37	PLUG, PIPE, CTSK., 3/8" (DRAIN)	1	103 873
38	SPIDER	1	50 316 R1
39	RIVET	12	80 161 R1
40	PIN, COTTER, 3/16 x 1"	2	103 407
41	LOCK	2	13 875 V
42	BOLT	4	69 410 R1
43	NOT SERVICED SEPARATELY		
44	GASKET	1	50 092 R1
45	CARRIER, w/CAPS, ASM.	1	83 411 R91
46	WASHER, LK., 1/2", MED.	10	103 323
47	BOLT	4	80 292 R1
48	BOLT	6	80 291 R1

PRINTED IN UNITED STATES OF AMERICA

MT-97

GROUP 14 - REAR AXLE



B-8660

FIG. 14-4 - REAR AXLE ASSEMBLY (Single Reduction, Codes 1404, 1405, 1452)
 (R-160, R-163, R-165, RC-160, R-160-4x4 - Code 1404)
 (R-164 - With Cast Wheels, Code 1405)
 (R-164 - With Disc Wheels, Code 1452)

KEY	DESCRIPTION	NO. REQ'D	I H PART NUMBER
	AXLE, ASM.		
	W/STD. BRK.		
	R-160, R-163, R-165, RC-160		
	5.285 TO 1 RATIO	1	69 005 R91

PRINTED IN UNITED STATES OF AMERICA

MT-97

GROUP 14 - REAR AXLE



KEY	DESCRIPTION	NO. REQ'D	I H PART NUMBER
FIG. 14-4 - REAR AXLE ASSEMBLY (Single Reduction, Codes 1404, 1405, 1452) - Continued			
	AXLE, ASM. (CONT'D.)		
	w/STD. BRK. (CONT'D)		
	R-160-4x4		
	6.166 TO 1 RATIO	1	120 403 R91
	R-164		
	5.285 TO 1 RATIO	1	83 586 R92
	6.166 TO 1 RATIO	1	83 587 R92
	6.666 TO 1 RATIO	1	83 588 R92
	7.166 TO 1 RATIO	1	83 589 R92
	w/INCREASED CAPACITY BRK., CODE 0405		
	R-160, R-163, R-165, RC-160		
	5.285 TO 1 RATIO	1	73 915 R91
	6.166 TO 1 RATIO	1	73 916 R91
	6.666 TO 1 RATIO	1	73 917 R91
	7.166 TO 1 RATIO	1	73 918 R91
	R-160-4x4		
	6.166	1	123 280 R91
	R-164		
	5.285	1	91 582 R92
	6.166 TO 1 RATIO	1	91 583 R92
	6.666 TO 1 RATIO	1	91 584 R92
	7.166 TO 1 RATIO	1	91 585 R92
	DIFFERENTIAL, ASM.		
	5.285 TO 1 RATIO	1	69 335 R93
	6.166 TO 1 RATIO	1	69 336 R93
	6.666 TO 1 RATIO	1	69 337 R93
	7.166 TO 1 RATIO	1	69 338 R93
1	ADJUSTER	2	54 528 HA
2	CARRIER, w/CAPS, ASM.	1	69 016 R92
3	BEARING	1	119 461 R91
4	GEAR SET		
	5.285 TO 1 RATIO	1	69 021 R93
	6.166 TO 1 RATIO	1	69 022 R93
	6.666 TO 1 RATIO	1	69 014 R93
	7.166 TO 1 RATIO	1	69 015 R93
5	BEARING	2	137 062 H ✓
	6.166 TO 1 RATIO	1	69 006 R91
	6.666 TO 1 RATIO	1	69 007 R91
	7.166 TO 1 RATIO	1	69 008 R91
6	BEARING	2	ST 957

MT-97

GROUP 14 - REAR AXLE



KEY	DESCRIPTION	NO. REQ'D	I H PART NUMBER
FIG. 14-4 - REAR AXLE ASSEMBLY (Single Reduction, Codes 1404, 1405, 1452) - Continued			
7	SPACER		
	.513" THICK	AR	49 422 HA
	.516" THICK	AR	49 412 HA
	.519" THICK	AR	49 413 HA
	.522" THICK	AR	49 414 HA
	.525" THICK ✓	AR	49 415 HA ✓
	.528" THICK	AR	49 416 HA
	.531" THICK	AR	49 417 HA
	.534" THICK	AR	49 418 HA
	.537" THICK	AR	49 419 HA
	.539" THICK	AR	49 420 HA
	.540" THICK	AR	49 423 HA
	.543" THICK	AR	49 421 HA
8	SHIM, LOWER (.003" THICK)	AR	52 774 H
9	SHIM, UPPER (.003" THICK)	AR	52 773 HA
10	SHIM		
	.010" THICK		52 748 HA
	.032" THICK		52 749 HA
11	CAGE, w/CUPS, ASM.	1	52 728 HAX
12	SEAL	1	49 392 H
13	SEAL, ASM.	1	77 819 H
14	SEAL	1	59 871 H
15	RETAINER, w/SEAL, ASM.	1	52 727 HBX
16	WASHER, LK., 9/16", EXT.	6	138 500
17	BOLT	6	83 968 RI
18	SEE GROUP 06		
19	BOLT	8	80 305 RI
20	BOLT	2	80 293 RI
21	WASHER, LK., 7/16", MED.	10	103 322
22	PIN, COTTER, 3/16 x 1"	2	103 407
23	LOCK	2	13 875 V
24	BOLT	4	69 018 RI
25	GASKET	1	69 177 RI
26	BEARING	2	ST 963
27	BEARING	2	ST 2 007 A
28	CASE	1	69 189 RI
29	WASHER	2	86 233 H
30	GEAR	2	69 304 RI
31	SPIDER	1	49 358 HB
32	WASHER	4	88 015 H
33	GEAR	4	69 169 RI
34	NUT, HEX., LK., 1/2NF	8	12 565 RI
35	CASE	1	69 184 RI
36	BOLT	8	69 019 RI
37	RIVET	14	69 017 RI
38	SCOOP	1	83 394 R9I
39	WASHER, LK., 1/4", MED.	1	103 319
40	BOLT, HEX-HD., 1/4NC x 3/4"	1	181 063
41	BREATHER	1	110 891 H



GROUP 14 - REAR AXLE

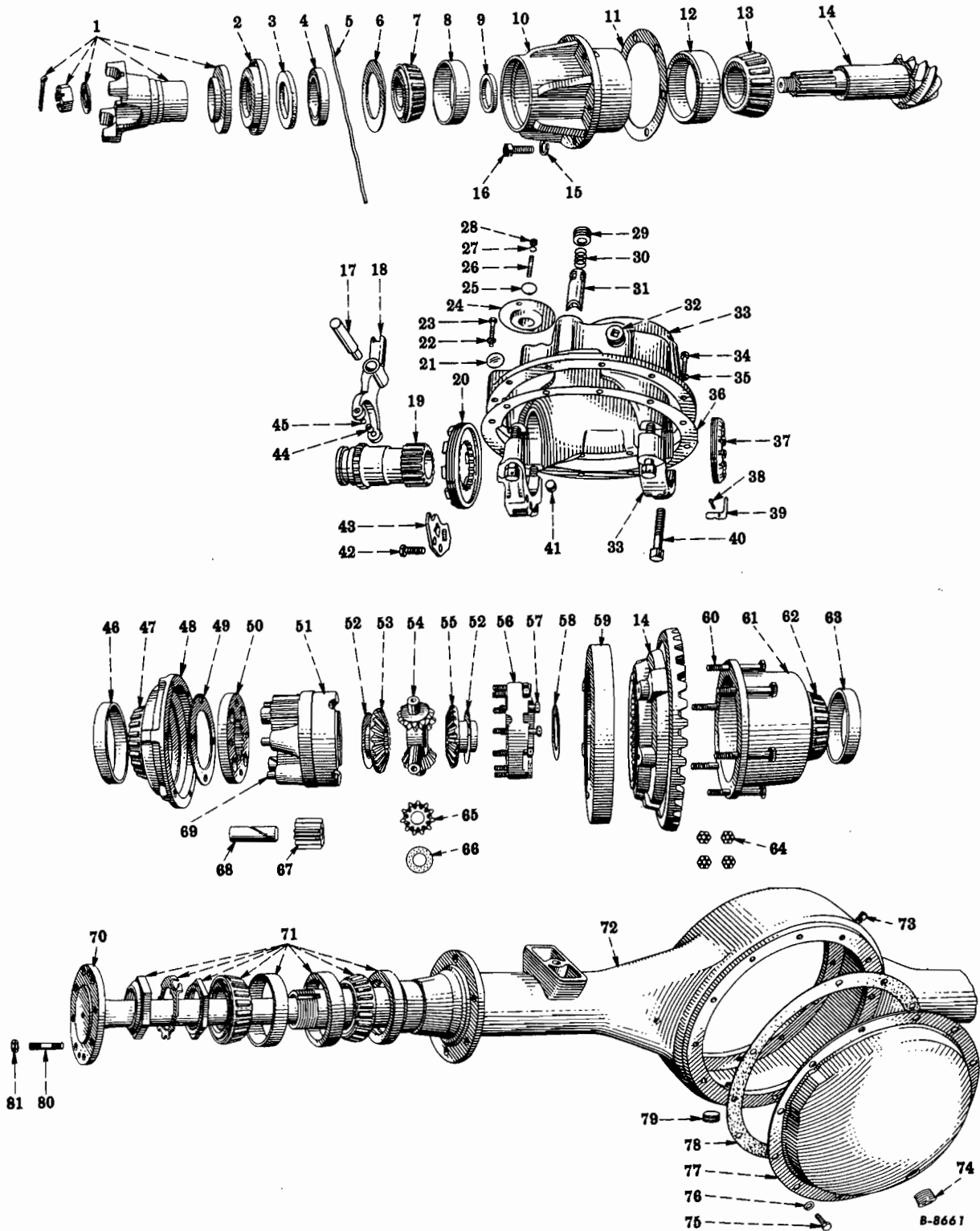


FIG. 14-5 - REAR AXLE ASSEMBLY (Eaton Model E-13 600, Two-Speed, Codes 1410, 1411, 1453)
(R-160, R-163, R-165, RC-160 - Code 1410)
(R-164 - With Cast Wheels, Code 1411)
(R-164 - With Disc Wheels, Code 1453)

(See following page for parts)

MT-97 Rev. No. 1, 2/56

GROUP 14 - REAR AXLE



KEY	DESCRIPTION	NO. REQ'D	I H PART NUMBER
FIG. 14-5 - REAR AXLE ASSEMBLY (Eaton Model E-13 600, Two-Speed, Codes 1410, 1411, 1453)			
	AXLE, ASM.		
	w/STD. BRK.		
	R-160, R-163, R-165, RC-160		
	5.142 AND 7.15 TO 1 RATIO	1	79 414 R91
	5.83 AND 8.11 TO 1 RATIO	1	79 415 R91
	6.33 AND 8.81 TO 1 RATIO	1	79 416 R91
	R-164		
	5.142 AND 7.15 TO 1 RATIO	1	83 583 R92
	5.83 AND 8.11 TO 1 RATIO	1	83 584 R92
	6.33 AND 8.81 TO 1 RATIO	1	83 585 R92
	w/INCREASED CAPACITY BRK., CODE 0405		
	R-160, R-163, R-165, RC-160		
	5.142 AND 7.15 TO 1 RATIO	1	79 417 R91
	5.83 AND 8.11 TO 1 RATIO	1	79 418 R91
	6.33 AND 8.81 TO 1 RATIO	1	79 419 R91
	R-164		
	5.142 AND 7.15 TO 1 RATIO	1	91 586 R92
	5.83 AND 8.11	1	91 587 R92
	6.33 AND 8.81 TO 1 RATIO	1	91 588 R92
	DIFFERENTIAL, ASM.		
	5.142 AND 7.15 TO 1 RATIO	1	80 049 R91
	5.83 AND 8.11 TO 1 RATIO	1	80 050 R91
	6.33 AND 8.81 TO 1 RATIO	1	80 051 R91
1	SEE GROUP 06		
2	RETAINER, w/SEAL, ASM.	1	75 024 R91
3	SEAL	1	59 871 H
4	SEAL, ASM.	1	77 819 H
5	SEAL	1	92 490 R1
6	WASHER	1	74 598 R1
7	BEARING	1	80 242 R91
8	BEARING	1	77 062 R1
9	SPACER		
	.313" THICK	AR	74 606 R1
	.318" THICK	AR	126 976 R1
	.323" THICK	AR	74 611 R1
	.328" THICK	AR	126 981 R1
	.333" THICK	AR	74 616 R1
	.338" THICK	AR	126 986 R1
	.343" THICK	AR	116 414 R1
	.348" THICK	AR	126 991 R1
10	CAGE, w/CUPS	1	80 058 R11
11	SHIM		
	.002" THICK	AR	80 068 R1
	.003" THICK	AR	80 069 R1
	.010" THICK	AR	80 070 R1
	.030" THICK	AR	80 071 R1
12	BEARING	1	56 040 R1
13	BEARING	1	80 523 R91

PRINTED IN UNITED STATES OF AMERICA

GROUP 14 - REAR AXLE



KEY	DESCRIPTION	NO. REQ'D	I H PART NUMBER
FIG. 14-5 - REAR AXLE ASSEMBLY (Eaton Model E-13 600, Two-Speed, Codes 1410, 1411, 1453) - Continued			
14	GEAR, SET		
	5.142 AND 7.15 TO 1 RATIO	1	80 065 R91
	5.83 AND 8.11 TO 1 RATIO	1	80 066 R91
	6.33 AND 8.81 TO 1 RATIO	1	80 067 R91
15	WASHER, LK., 9/16", EXT.	6	138 500
16	BOLT	6	92 813 R1
17	SHAFT	1	77 596 R2
18	FORK, w/PINS, ROLLERS, ASM.	1	77 598 R11
19	CLUTCH	1	89 701 H
20	ADJUSTER	1	49 393 HA
21	PLUG, EXPANSION, 1-1/4"	1	172 558
22	WASHER, LK., 7/16", EXT.	2	138 493
23	BOLT, HEX-HD., 7/16NC x 3"	2	181 150
24	SEAL, w/SPRING, ASM.	1	76 616 R11
25	SPRING	1	104 272 R1
26	STUD	2	76 617 R
27	WASHER, LK., 7/16", MED.	2	103 322
28	NUT, HEX., 7/16NF	2	271 505
29	PLUG, PIPE, CTSK., 1"	1	103 876
30	SPRING	1	68 681 H
31	TUBE	1	68 832 HA
32	PLUG, PIPE, CTSK., 1"	1	103 876
33	CARRIER, w/CAPS, ASM.	1	80 055 R91
34	BOLT, HEX-HD., 7/16NC x 1-1/4"	10	181 139
35	WASHER, LK., 7/16", MED.	10	103 322
36	GASKET	1	89 706 H
37	ADJUSTER	1	49 395 H
38	PIN, COTTER, 3/16 x 1"	1	103 407
39	LOCK	1	116 163 H
40	BOLT	4	40 563 V
41	PLUG, PIPE, CTSK., 1/2"	1	103 874
42	BOLT	2	40 635 V
43	LOCK	1	49 424 H
44	ROLLER	2	49 399 H
45	PIN	2	49 398 H
46	BEARING	1	ST 897
47	BEARING	1	ST 789
48	CASE	1	72 269 H
49	WASHER	1	49 381 HA
50	PLATE	1	71 747 H
51	CASE, w/PINS, ASM.	1	89 685 HX
52	WASHER	2	89 690 H
53	GEAR	1	63 701 R1
54	SPIDER	1	89 693 H
55	GEAR	1	63 702 R1
56	CASE	1	89 687 H
57	BOLT		
	LONG	8	89 346 H
	SHORT	4	89 340 H
58	WASHER	1	56 620 H
59	DRUM	1	68 830 H
60	BOLT	6	49 376 H

MT-97 Rev. No. 2, 7/56

GROUP 14 - REAR AXLE



KEY	DESCRIPTION	NO. REQ'D	I H PART NUMBER
FIG. 14-5 - REAR AXLE ASSEMBLY (Eaton Model E-13 600, Two-Speed, Codes 1410, 1411, 1453) - Continued			
61	CASE	1	89 694 H
62	BEARING	1	108 334 H
63	BEARING	1	108 326 H
64	NUT	6	49 377 H
65	GEAR	4	63 703 R1
66	WASHER	4	89 692 H
67	GEAR	4	71 746 H
68	SHAFT	4	89 695 H
69	PIN	4	49 385 H
70	SHAFT		
	R-160, R-163, R-165, RC-160	2	108 117 R1
	R-164	2	101 716 R1
71	SEE GROUP 17		
72	HOUSING, ASM.		
	R-160, R-163, R-165, RC-160	1	77 611 R92
	R-164	1	95 286 R91
73	BREATHER	1	110 891 H
74	PLUG, PIPE, SQ-HD., 3/4" (FILLER)	1	16 845 R1
75	BOLT, HEX-HD., 7/16NC x 5/8"	12	181 133
76	WASHER, LK., 7/16", MED.	12	103 322
77	COVER	1	49 435 H
78	GASKET	1	49 430 H
79	PLUG, PIPE, CTSK., 3/4" (DRAIN)	1	113 186
80	STUD		
	R-160, R-163, R-165, RC-160	16	113 801 H
	R-164	12	119 345 H
81	NUT		
	HEX., LOCK		
	1/2NF (R-160, R-163, R-165, RC-160)	16	12 565 R1
	5/8NF (R-164)	12	12 566 R1

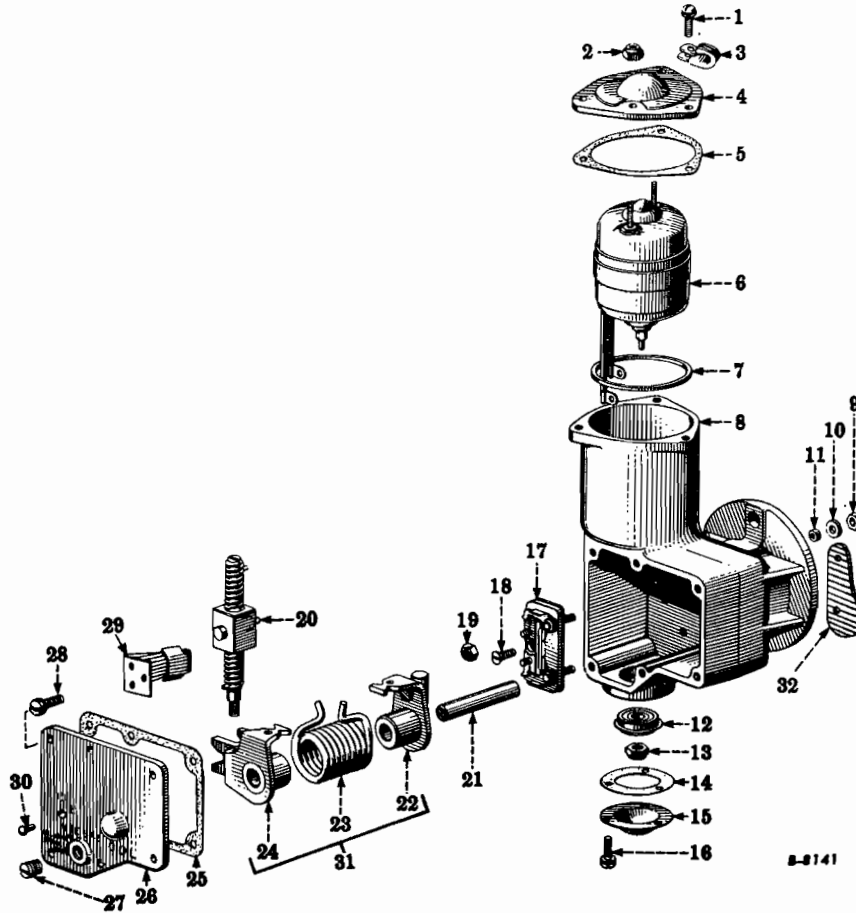
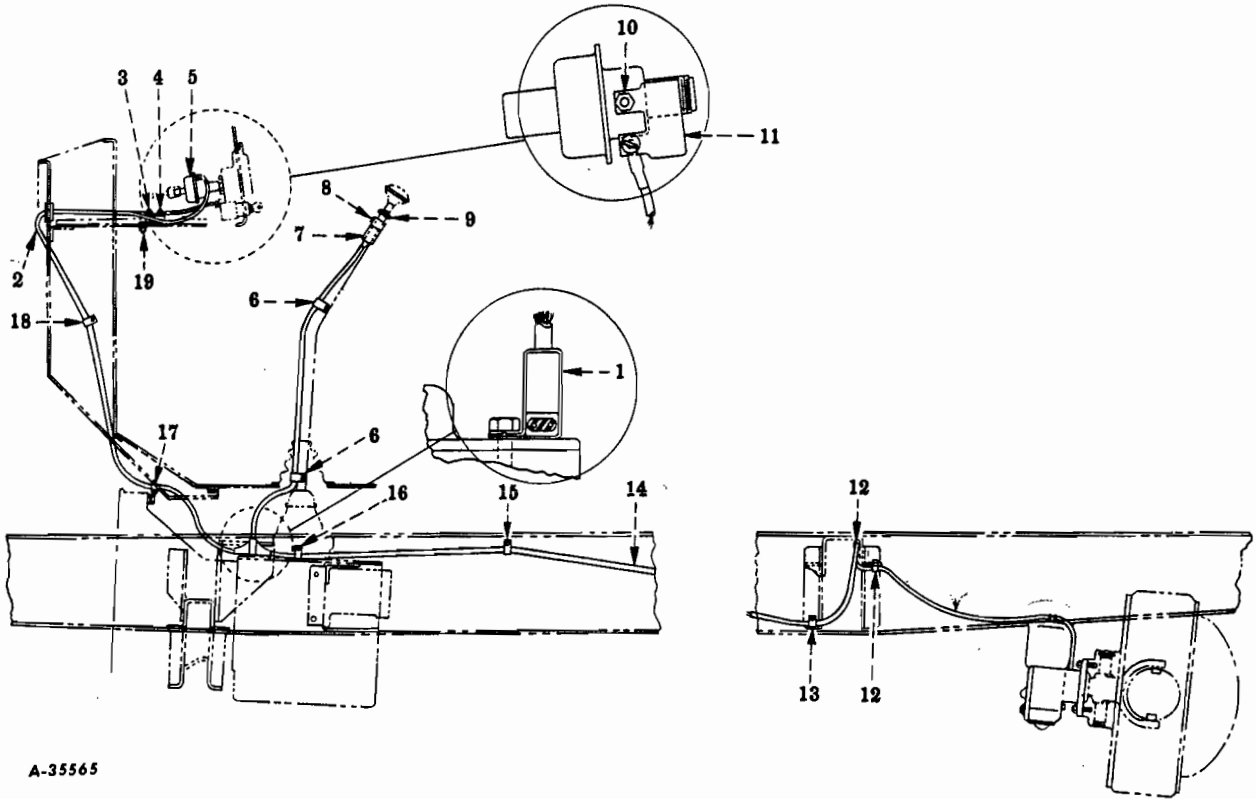


FIG. 14-6 - ELECTRIC SHIFT
(R-160, RC-160 Series)

KEY	DESCRIPTION	NO. REQ'D	I H PART NUMBER
	MOTOR, w/CONTROL, ASM.		
	6 VOLT	1	79 065 R91
	12 VOLT ✓	1	88 712 R91
1	SCREW, w/WASHER, ASM.	3	79 082 R91
2	NUT	2	106 788 H
3	CLIP	1	78 599 R1
4	COVER	1	79 057 R1
5	GASKET	1	79 058 R1
6	MOTOR, ASM.		
	6 VOLT	1	79 056 R91
	12 VOLT	1	85 374 R91
7	GROMMET	1	79 087 R1
8	HOUSING	1	79 064 R1
9	NUT, HEX., No. 8NC	2	113 103
10	WASHER	2	79 085 R1
11	BUSHING	2	79 084 R1

MT-97

GROUP 14 - REAR AXLE



A-35565

FIG. 14-7 - ELECTRIC SHIFT CONTROL
(R-160, RC-160 Series)

KEY	DESCRIPTION	NO. REQ'D	I H PART NUMBER
1	BRACKET		
	R-160 SERIES	1	74 646 R1
	RC-160 SERIES	1	93 695 R2
2	CABLE, ASM.		
	R-160 SERIES	1	82 766 R91
	RC-160 SERIES	1	93 605 R91
3	NUT, HEX., No. 10NF WASHER	1	112 432
		1	79 086 R1
4	BREAKER, w/LEAD, ASM.	1	82 734 R91
5	ADAPTER		
	6 VOLT	1	81 707 R91
	12 VOLT (SEE NOTE A)	1	127 279 R91
6	CLIP		
	LOWER	1	77 410 R1
	UPPER	1	80 230 R1
7	SWITCH, ASM.	1	79 348 R91
	SHROUD	1	134 011 R1
NOTE A - 6 VOLT ADAPTER 81 707 R1 AND RESISTOR 85 377 R1 WERE USED ON EARLY PRODUCTION TRUCKS WITH 12 VOLT SYSTEMS. LATE PRODUCTION TRUCKS WITH 12 VOLT SYSTEMS USE 12 VOLT ADAPTER 127 279 R91.			

PRINTED IN UNITED STATES OF AMERICA

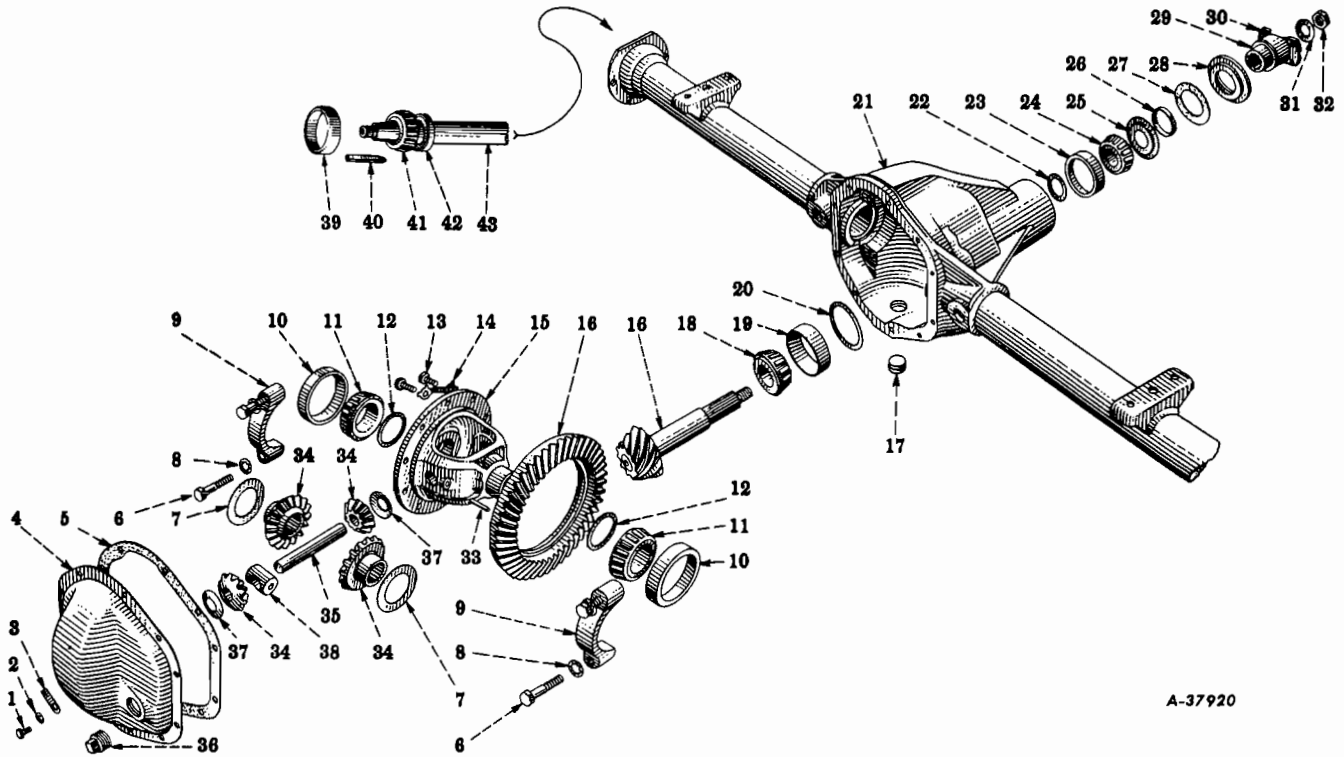
MT-97

GROUP 14 - REAR AXLE



KEY	DESCRIPTION	NO. REQ'D	I H PART NUMBER
FIG. 14-7 - ELECTRIC SHIFT CONTROL - Continued			
8	BOLT, HEX-HD., 5/16NF x 1"	1	181 608
	NUT, HEX., 5/16NF	1	103 025
	WASHER, LK., 5/16", MED.	1	103 320
9	BRACKET	1	74 393 R1
10	NUT, HEX., No. 10NF	1	112 432
	WASHER	1	79 086 R1
11	RESISTOR (12 VOLT) (SEE NOTE A)	1	85 377 R1
	NUT, HEX., No. 10NF	1	112 432
	SCREW, RD-HD., No. 10NF x 3/8"	1	101 127
	WASHER, LK., No. 10, INT.	1	79 086 R1
12	CLIP	AR	137 193
	BOLT, HEX-HD., 1/4NF x 3/4"	AR	182 654
	NUT, HEX., 1/4NF	AR	103 024
	WASHER, LK., 1/4", MED.	AR	103 319
13	CLIP	AR	137 193
	EXTENSION, CLIP	AR	137 230
	BOLT, HEX-HD., 1/4NF x 3/4"	AR	182 654
	NUT, HEX., 1/4NF	AR	103 024
	WASHER, LK., 1/4", MED.	AR	103 319
14	CABLE, ASM.	1	79 366 R91
15	CLIP	AR	137 193
	BOLT, HEX-HD., 1/4NF x 1-1/4"	AR	182 660
	NUT, HEX., 1/4NF	AR	103 024
	WASHER, LK., 1/4", MED.	AR	103 319
16	CLIP	AR	137 193
17	CLIP	AR	137 193
18	CLIP	AR	137 193
	BOLT, HEX-HD., 1/4NF x 1/2"	AR	182 647
	WASHER, LK., 1/4", MED.		
19	NUT, HEX., No. 10NF	1	103 088
	SCREW, RD-HD., No. 10NF x 1/2"	1	100 764
	WASHER, LK., No. 10, MED.	1	106 497
NOTE A - 6 VOLT ADAPTER 81 707 R1 AND RESISTOR 85 377 R1 WERE USED ON EARLY PRODUCTION TRUCKS WITH 12 VOLT SYSTEMS. LATE PRODUCTION TRUCKS WITH 12 VOLT SYSTEMS USE 12 VOLT ADAPTER 127 279 R91.			

GROUP 14 - REAR AXLE



A-37920

FIG. 14-8 - REAR AXLE ASSEMBLY (Semi Floating, Code 1424)
- (R-100 Series)

KEY	DESCRIPTION	NO. REQ'D	I H PART NUMBER
	AXLE, w/BRK., ASM.		
	4.09 TO 1 RATIO		
	FOR TRANS. CODES 1348, 1383	1	127 275 R91
	FOR TRANS. CODES 1374	1	128 592 R91
	4.55 TO 1 RATIO	1	148 608 R91
1	BOLT, HEX-HD., 5/16NC x 5/8"	10	131 034
2	WASHER, LK., 5/16", MED.	10	103 320
3	NOT SERVICED		
4	COVER	1	127 381 R1
5	GASKET	1	127 332 R1
6	BOLT, HEX-HD., 1/2NC x 2-1/4"	4	131 170
7	WASHER	2	127 839 R1
8	WASHER, LK., 1/2", INT.	4	115 551
9	NOT SERVICED SEPARATELY		
10	BEARING	2	123 237 R1
11	BEARING	2	130 504 H
12	SHIM		
	.003" THICK	AR	127 892 R1
	.005" THICK	AR	127 893 R1
	.010" THICK	AR	127 894 R1
	.030" THICK	AR	127 895 R1
13	BOLT	10	127 899 R1

PRINTED IN UNITED STATES OF AMERICA

MT-97 Rev. No. 1, 2/56

GROUP 14 - REAR AXLE



KEY	DESCRIPTION	NO. REQ'D	I H PART NUMBER
-----	-------------	-----------	-----------------

FIG. 14-8 - REAR AXLE ASSEMBLY (Semi Floating, Code 1424) - Continued

14	NOT USED		
15	CASE	1	127 333 R1
16	GEAR, SET		
	4.09 TO 1 RATIO	1	127 896 R91
	4.55 TO 1 RATIO	1	151 013 R91
17	PLUG, PIPE, CTSK., 3/4" (DRAIN)	1	113 130
18	BEARING	1	128 241 R91
19	BEARING	1	123 242 R1
20	SHIM		
	.003" THICK	AR	127 901 R1
	.005" THICK	AR	127 902 R1
	.010" THICK	AR	127 903 R1
21	HOUSING, w/CAPS, ASM.	1	127 330 R91
22	SHIM		
	.003" THICK	AR	127 904 R1
	.005" THICK	AR	127 905 R1
	.010" THICK	AR	127 906 R1
	.030" THICK	AR	127 907 R1
23	BEARING	1	451 495 R1
24	BEARING	1	123 239 R91
25	SLINGER	1	127 908 R1
26	SEAL (EARLY PRODUCTION)	1	127 967 R1
27	GASKET	1	127 969 R1
28	SEAL, ASM.	1	127 968 R91
29	SEE GROUP 06		
30	SEE GROUP 06		
31	SEE GROUP 06		
32	SEE GROUP 06		
33	PIN	1	127 338 R1
34	GEAR, SET	1	127 334 R91
35	SHAFT	1	127 337 R1
36	PLUG, PIPE, SQ-HD., 3/4" (FILLER)	1	16 345 R1
37	WASHER	2	127 390 R1
38	BLOCK	1	127 391 R1
39	BEARING	2	6 468 H
40	KEY	2	127 973 R1
41	BEARING	2	ST 757
42	SEAL, ASM.	2	127 979 R91
43	SHAFT	2	127 972 R1

EXPORT

	AXLE, w/BRAKES, ASM. (5.38 TO 1 RATIO)		136 371 R91
16	GEAR, SET (5.38 TO 1 RATIO)	1	137 736 R91

MT-97

GROUP 14 - REAR AXLE

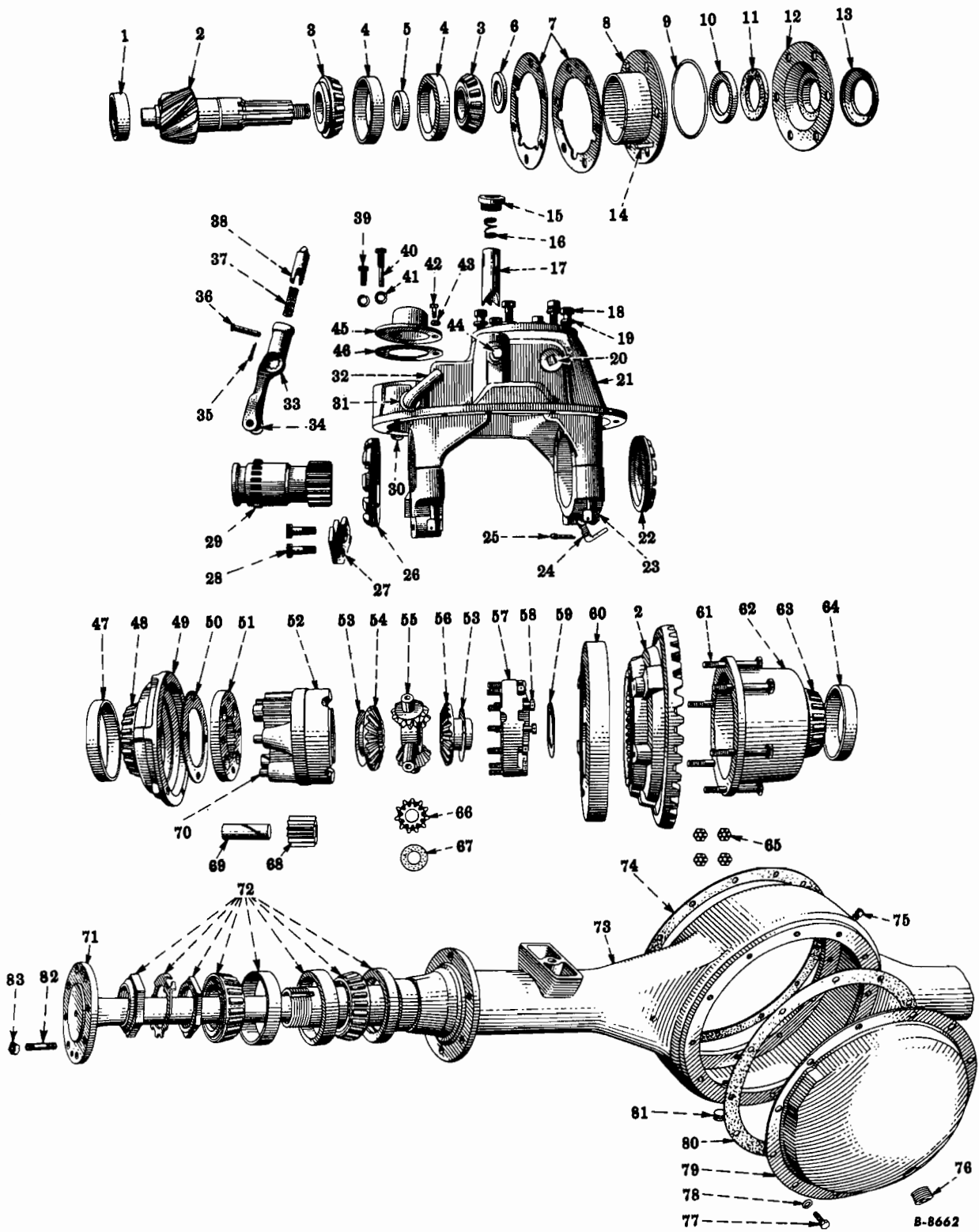


FIG. 14-9 - REAR AXLE ASSEMBLY (Eaton, Model E-1350, Two-Speed, Code 1457)
(R-150 Series)

(See following page for parts)

MT-97

GROUP 14 - REAR AXLE



KEY	DESCRIPTION	NO. REQ'D	I H PART NUMBER
FIG. 14-9 - REAR AXLE ASSEMBLY (Eaton, Model E-1350, Two-Speed, Code 1457)			
	AXLE, ASM.		
	W/STANDARD BRK.		
	5.142 AND 7.15 TO 1 RATIO	1	96 947 R91
	5.83 AND 8.11 TO 1 RATIO	1	96 949 R91
	6.33 AND 8.81 TO 1 RATIO	1	96 948 R91
	W/INCREASED CAPACITY BRK., CODE 0405		
	5.142 AND 7.15 TO 1 RATIO	1	96 950 R91
	5.83 AND 8.11 TO 1 RATIO	1	96 952 R91
	6.33 AND 8.81 TO 1 RATIO	1	96 951 R91
	DIFFERENTIAL, ASM.		
	5.142 AND 7.15 TO 1 RATIO	1	97 382 R91
	5.83 AND 8.11 TO 1 RATIO	1	97 383 R91
	6.33 AND 8.81 TO 1 RATIO	1	97 384 R91
1	BEARING	1	49 109 HB
2	GEAR, SET		
	5.142 AND 7.15 TO 1 RATIO	1	89 696 H
	5.83 AND 8.11 TO 1 RATIO	1	92 220 H
	6.33 AND 8.11 TO 1 RATIO	1	89 697 H
3	BEARING	2	ST 796
4	BEARING	2	ST 957
5	SPACER		
	.513" THICK	AR	49 422 HA
	.516" THICK	AR	49 412 HA
	.519" THICK	AR	49 413 HA
	.522" THICK	AR	49 414 HA
	.525" THICK	AR	49 415 HA
	.528" THICK	AR	49 416 HA
	.531" THICK	AR	49 417 HA
	.534" THICK	AR	49 418 HA
	.537" THICK	AR	49 419 HA
	.539" THICK	AR	49 420 HA
	.540" THICK	AR	49 423 HA
	.543" THICK	AR	49 421 HA
6	WASHER	1	49 291 H
7	SHIM		
	.002" THICK	AR	52 023 H
	.003" THICK	AR	52 024 H
	.010" THICK	AR	52 022 H
	.030" THICK	AR	52 021 H
8	CAGE, w/CUPS, ASM.	1	49 386 HX
9	SEAL	1	49 392 H
10	SEAL, ASM.	1	27 346 HB
11	SEAL	1	49 351 H
12	RETAINER, w/SEAL, ASM.	1	49 350 HAX
13	SEE GROUP 06		
14	PIN, DOWEL, 1/4 x 1/2"	1	103 735
15	PLUG, PIPE, CTSK., 1"	1	103 876
16	SPRING	1	68 681 H

PRINTED IN UNITED STATES OF AMERICA

MT-97 Rev. No. 2, 7/56

GROUP 14 - REAR AXLE



KEY	DESCRIPTION	NO. REQ'D	I H PART NUMBER
FIG. 14-9 - REAR AXLE ASSEMBLY (Eaton, Model E-1350, Two-Speed, Code 1457) - Continued			
17	TUBE	1	68 832 HA
18	BOLT	6	49 407 H
19	WASHER, L.K., 9/16", MED.	6	103 324
20	PLUG, PIPE, CTSK., 1"	1	103 876
21	CARRIER, w/CAPS, ASM.	1	89 700 HX
22	ADJUSTER	1	49 395 H
23	BOLT	4	40 563 V
24	LOCK	1	116 163 H
25	PIN, COTTER, 3/16 x 1"	1	103 407
26	ADJUSTER	1	49 393 HA
27	LOCK	1	49 424 H
28	BOLT	2	40 635 V
29	CLUTCH	1	89 701 H
30	PLUG, EXPANSION, 15/16"	1	172 541
31	COVER	1	63 753 RI
	RETAINER	1	63 752 RI
	WASHER	1	63 751 RI
32	SHAFT	1	89 703 H
33	FORK, w/PINS, ROLLERS, ASM.	1	89 702 HX
34	PIN	2	49 398 H
	ROLLER	2	49 399 H
35	PIN, COTTER, 3/32 x 1/2"	1	103 372
36	PIN	1	89 375 H
37	SPRING	1	89 374 H
38	PLUNGER	1	89 373 H
39	BOLT, HEX-HD., 7/16NC x 7/8"	3	89 380 H
40	BOLT, HEX-HD., 7/16NC x 1-15/16"	1	89 379 H
41	WASHER, L.K., 7/16", MED.	4	103 322
42	BOLT, HEX-HD. 7/16NC x 1-1/4"	10	181 139
	7/16NC x 3"	2	181 150
43	WASHER, L.K. 7/16", MED.	10	103 322
	7/16", EXT.	2	138 493
44	NOT USED		
45	COVER	1	89 705 H
46	GASKET	1	89 378 H
47	BEARING	1	ST 897
48	BEARING	1	ST 789
49	CASE	1	72 269 H
50	WASHER	1	49 381 HA
51	PLATE	1	71 747 H
52	CASE, w/PINS, ASM.	1	89 685 HX
53	WASHER	2	78 116 RI
54	GEAR	1	97 386 RI
55	SPIDER	1	89 693 H
56	GEAR	1	97 387 RI
57	CASE	1	89 687 H

MT-97

GROUP 14 - REAR AXLE



KEY	DESCRIPTION	NO. REQ'D	I H PART NUMBER
FIG. 14-9 - REAR AXLE ASSEMBLY (Eaton, Model E-1350, Two-Speed, Code 1457) - Continued			
58	BOLT		
	LONG	3	39 346 H
	SHORT	4	39 340 H
59	WASHER	1	56 620 H
60	DRUM	1	63 330 H
61	BOLT	6	49 376 H
62	CASE	1	39 694 H
63	BEARING	1	49 369 H
64	BEARING	1	49 363 H
65	NUT	6	49 377 H
66	GEAR	4	63 763 RI
67	WASHER	4	39 692 H
68	GEAR	4	71 746 H
69	SHAFT	4	97 335 RI
70	PIN	4	49 335 H
71	SHAFT	4	97 322 RI
72	SEE GROUP 17		
73	HOUSING, ASM.	1	97 395 R91
74	GASKET	1	39 706 H
75	BREATHER	1	110 391 H
76	PLUG, PIPE, SQ-HD., 3/4", FILLER	1	16 845 RI
77	BOLT, HEX-HD., 7/16NC x 5/8"	12	131 133
78	WASHER, LK., 7/16", MED.	12	103 322
79	COVER	1	49 435 H
80	GASKET	1	49 430 H
81	PLUG, PIPE, CTSK., 3/4", DRAIN	1	113 136
82	STUD	12	113 801 H
83	NUT	12	12 565 RI

MT-97

GROUP 14 - REAR AXLE

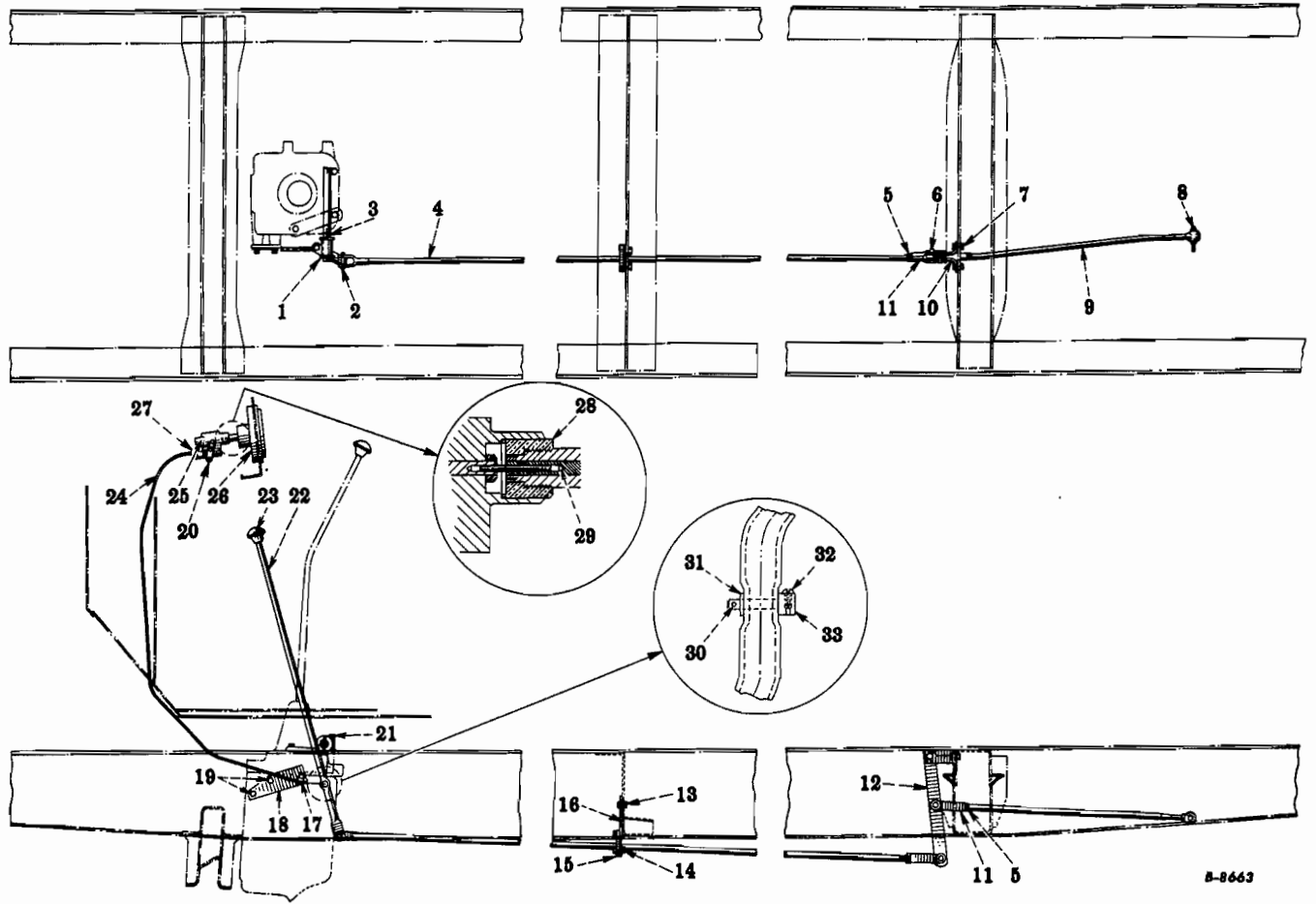


FIG. 14-10 - MANUAL SHIFT CONTROL
(R-150 Series)

KEY	DESCRIPTION	NO. REQ'D	I H PART NUMBER
1	WASHER	1	13 611 VA
	PIN, COTTER, 1/8 x 1"	1	103 385
2	PIN, YOKE, 7/16"	1	16 619 R1
	PIN, COTTER, 1/8 x 1"	2	103 385
3	SHAFT, ASM. FOR TRANS. CODE 1303	1	97 090 R91
	FOR TRANS. CODE 1320	1	97 269 R91
4	ROD, ASM. 130" W.B.	1	96 666 R11
	142" W.B.	1	96 667 R11
	154" W.B.	1	96 668 R11
	172" W.B.	1	96 669 R11
5	NUT, HEX., 1/2NF	2	103 028
6	PIN	3	84 727 H

PRINTED IN UNITED STATES OF AMERICA

MT-97

GROUP 14 - REAR AXLE



KEY	DESCRIPTION	NO. REQ'D	I H PART NUMBER
FIG. 14-10 - MANUAL SHIFT CONTROL - Continued			
7	BOLT, HEX-HD., 3/8NF x 1"	2	182 718
	NUT, HEX., 3/8NF	2	103 026
	WASHER, LK., 3/8", MED.	2	103 321
8	LUBRICATOR, 1/8", STGHT.	1	109 461
9	ROD, ASM.	1	97 261 R91
10	BRACKET, ASM.	1	84 721 H
11	YOKE	2	84 726 HA
12	LEVER, ASM.	1	84 724 H
13	BOLT, HEX-HD., 5/16NF x 7/8"	2	182 688
	NUT, HEX., 5/16NF	2	103 025
	WASHER, FL., 5/16"	2	118 774
	WASHER, LK., 5/16", MED.	2	103 320
14	BOLT, HEX-HD., 1/4NF x 7/8"	3	182 657
	NUT, HEX., 1/4NF	3	103 024
	WASHER, FL., 1/4"	3	118 773
	WASHER, LK., 1/4", MED.	3	103 319
15	GUIDE	1	22 691 V
16	BRACKET	1	96 713 R1
17	CLIP	1	137 541
	BOLT, HEX-HD., 1/4NF x 1/2"	1	182 647
	NUT, HEX., 1/4NF	1	103 024
	WASHER, LK., 1/4", MED.	1	103 319
18	BRACKET	1	97 067 R1
19	BOLT, HEX-HD., 3/8NC x 1" (R.H.D.)	2	181 112
	SPACER (R.H.D.)	2	16 135 DA
	WASHER, LK., 3/8", MED. (R.H.D.)	2	103 321
20	LEVER	1	97 163 H
	SCREW, RD-HD., SLT., No. 10NF x 1/2"	1	132 909
	NUT, HEX., No. 10NF	1	103 088
	WASHER, LK., No. 10, MED.	1	106 497
21	BOLT, HEX-HD., 3/8NC x 4"	3	433 111
	WASHER, LK., 3/8", MED.	3	103 321
22	LEVER	1	97 089 R11
23	HANDLE	1	16 780 H
24	CABLE, w/CONDUIT, ASM.	1	97 055 R11
25	ADAPTER, ASM.	1	49 739 HC
26	SEE GROUP 10		
27	CLAMP	1	97 819 H
	SCREW, RD-HD., SLT., No. 10NC x 7/16"	2	132 836
	WASHER, LK., No. 10, MED.	2	106 497
28	BUSHING	1	51 402 R1
29	SHAFT	1	71 147 H
30	PIN, COTTER, 1/16 x 1/2"	1	103 361

MT-97

MEMORANDA

